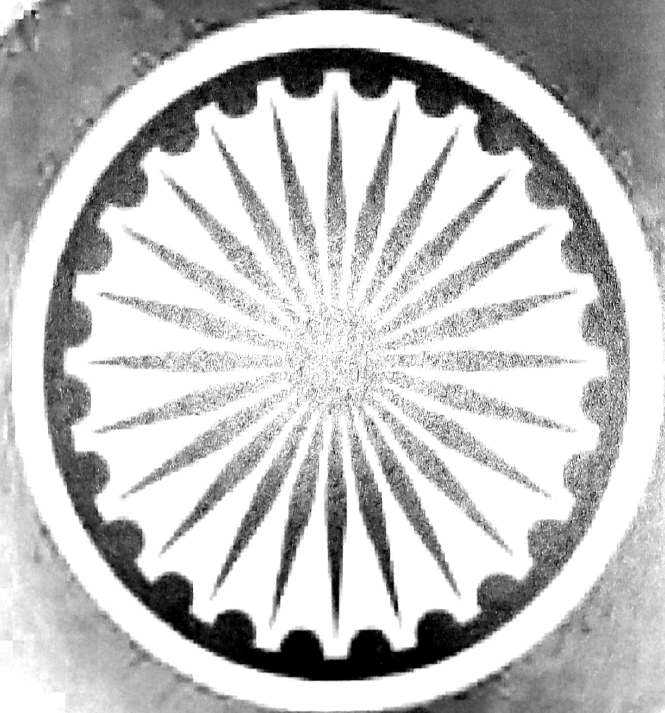


Magnificent Bharat

by CORONATION




Signature

THESE ARE YOUR REAL HEROES



THESE ARE INVADERS




PRINCIPAL
Nutan Mahavidyalaya
Sailu, Dist. Parbhani

THIS IS NOT YOUR PAST

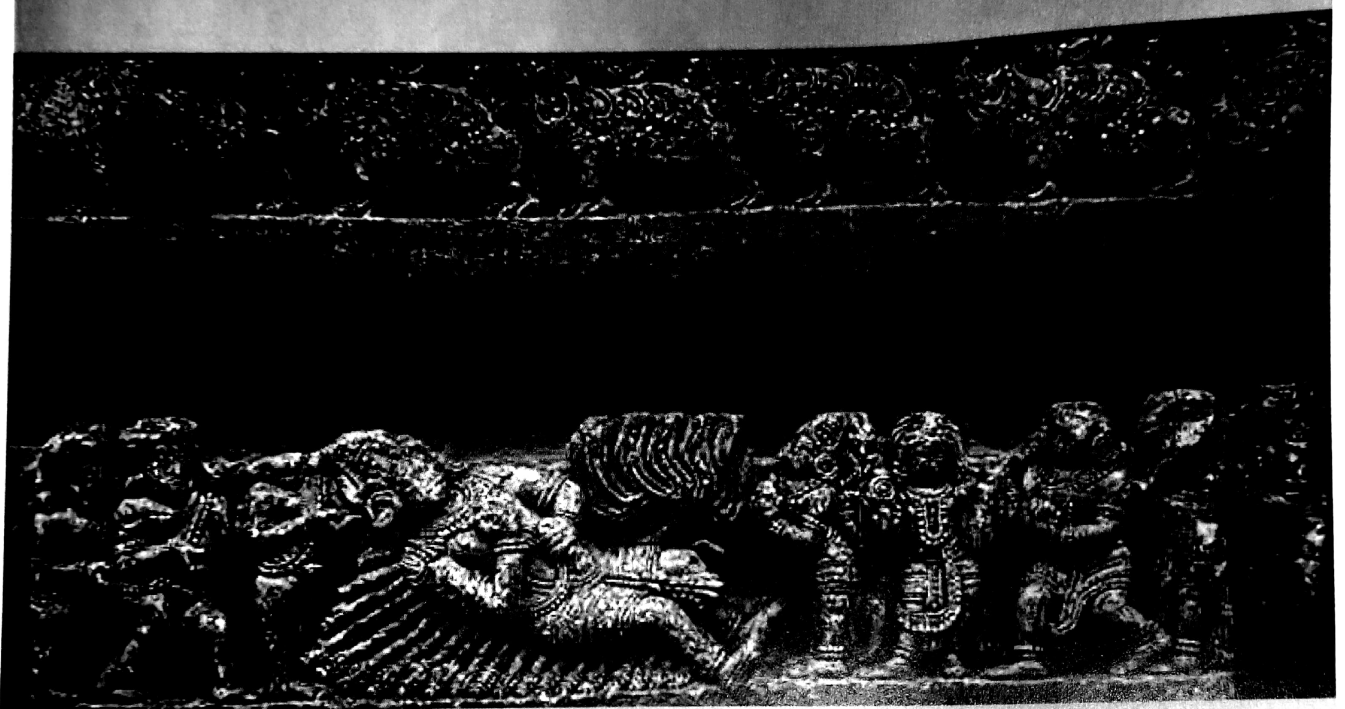


THIS IS YOUR PAST



**We dont need Historians to tell us
our Past,**

**Our Past is engraved on stones in
our world class temples.**



**Image shows Bhishma Pitamah
Lying on a Bed of Arrows**


**THE CHENNAKESHAHA TEMPLE,
BELUR, KARNATAKA, BHARAT**

PRINCIPAL

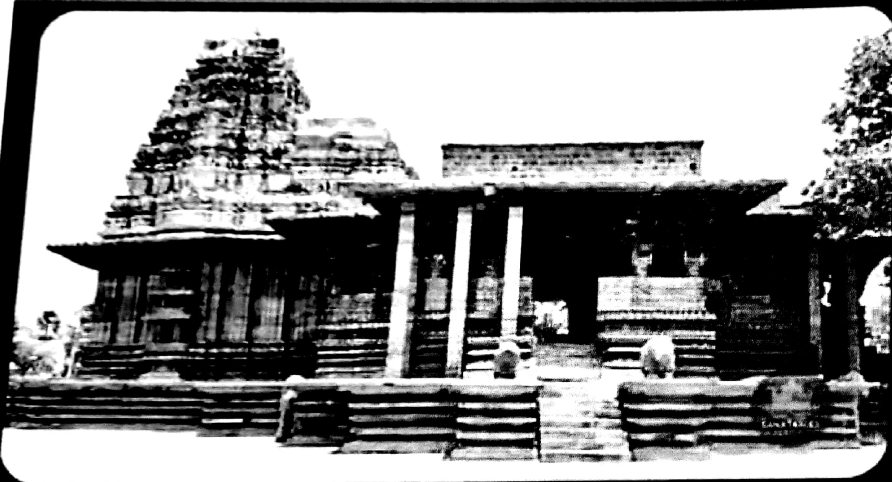
**Nutan Mahavidyalaya
Sailu, Dist. Parbhani**

**Ruins Being so Beautiful,
Just Imagine the times when It
was in its Full Glory.**

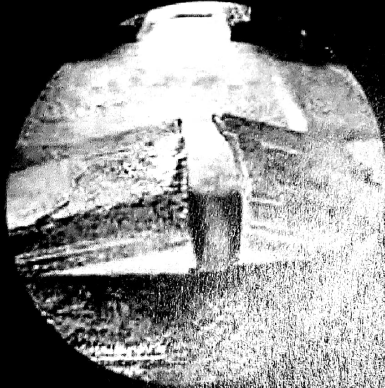



PRINCIPAL
Nutan Mahavidyalaya
Sailu, Dist. Parbhani

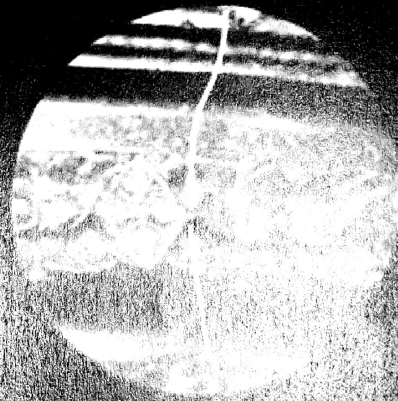
Ramappa Temple dating back to 1213 AD




High Heels



Earthquake Proof




Minute Holes


PRINCIPAL
Nutan Mahavidyalaya
Sailu, Dist. Parbhani

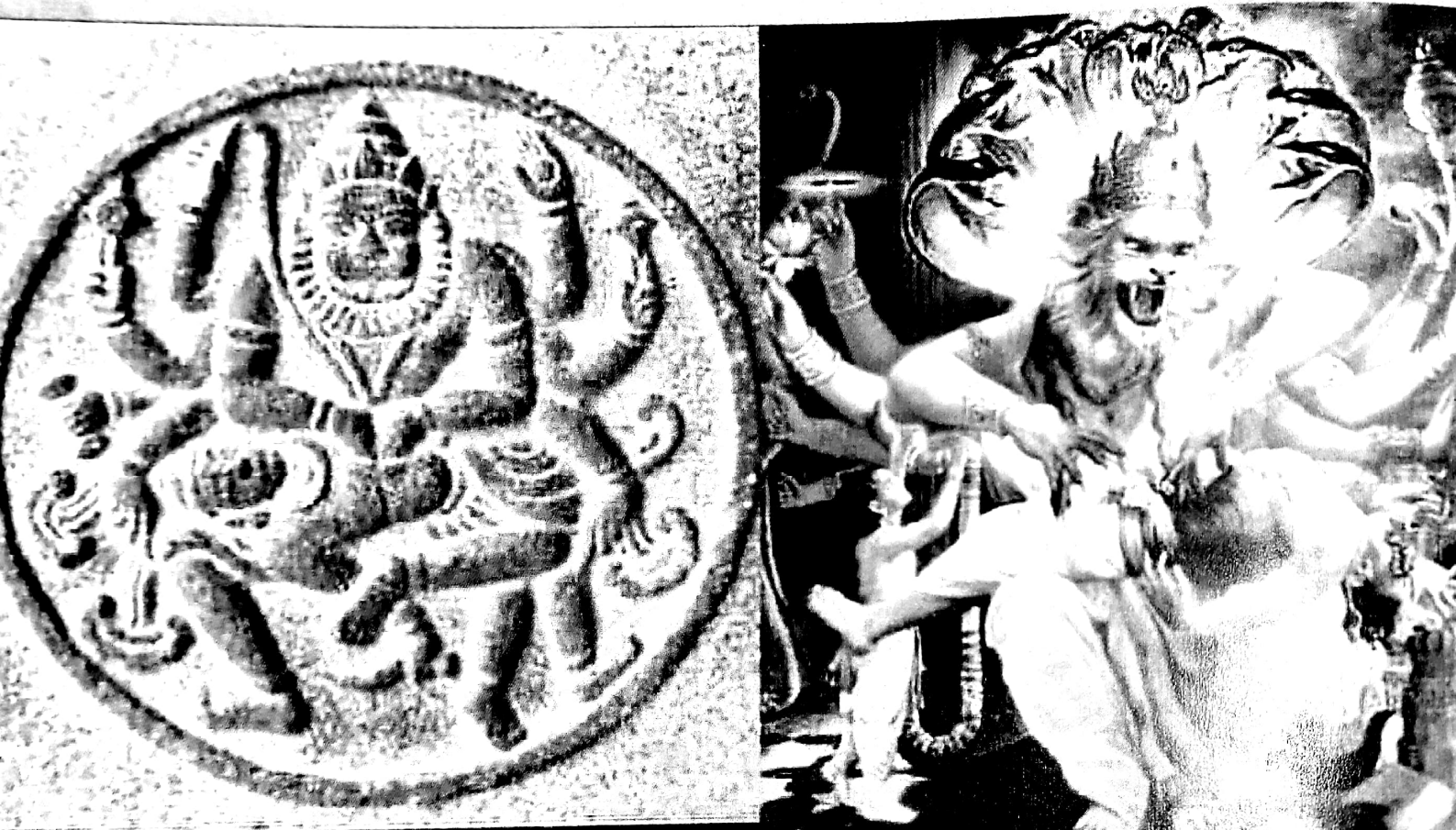
Statue of Sushruta, Father of Indian Medicine on Display in Royal Australasian College of Surgeons, Melbourne.



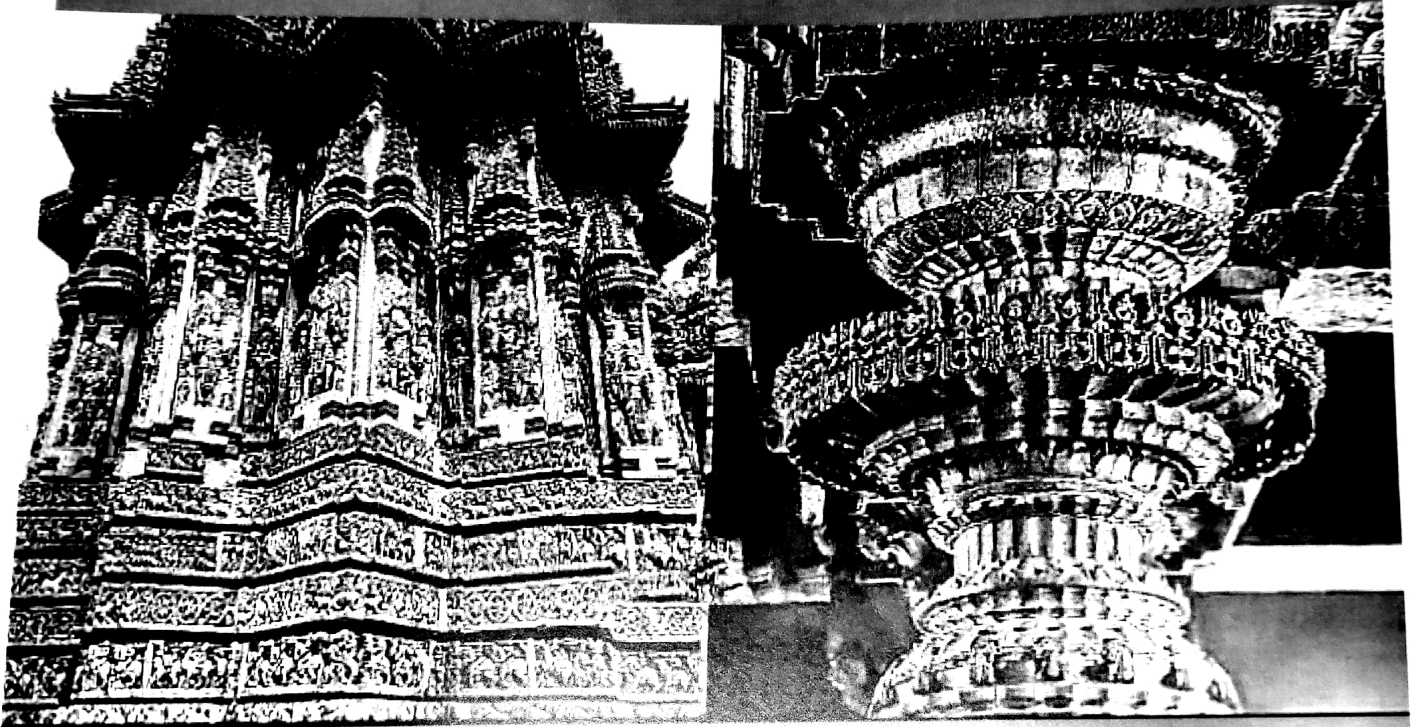
The Sushrutaa Samhita is among the most important ancient medical treatises and is one of the fundamental texts of the medical tradition in India along with the Charak Samhita.

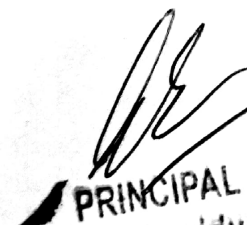

PRINCIPAL
Nutan Mahavidyalaya
Sailu, Dist. Parbhani

**Bhagwan Narsimha on a pillar at
Kaiyuan Temple, GANZHOU,
CHINA**



The Architectural Marvels created by our Great Ancestors



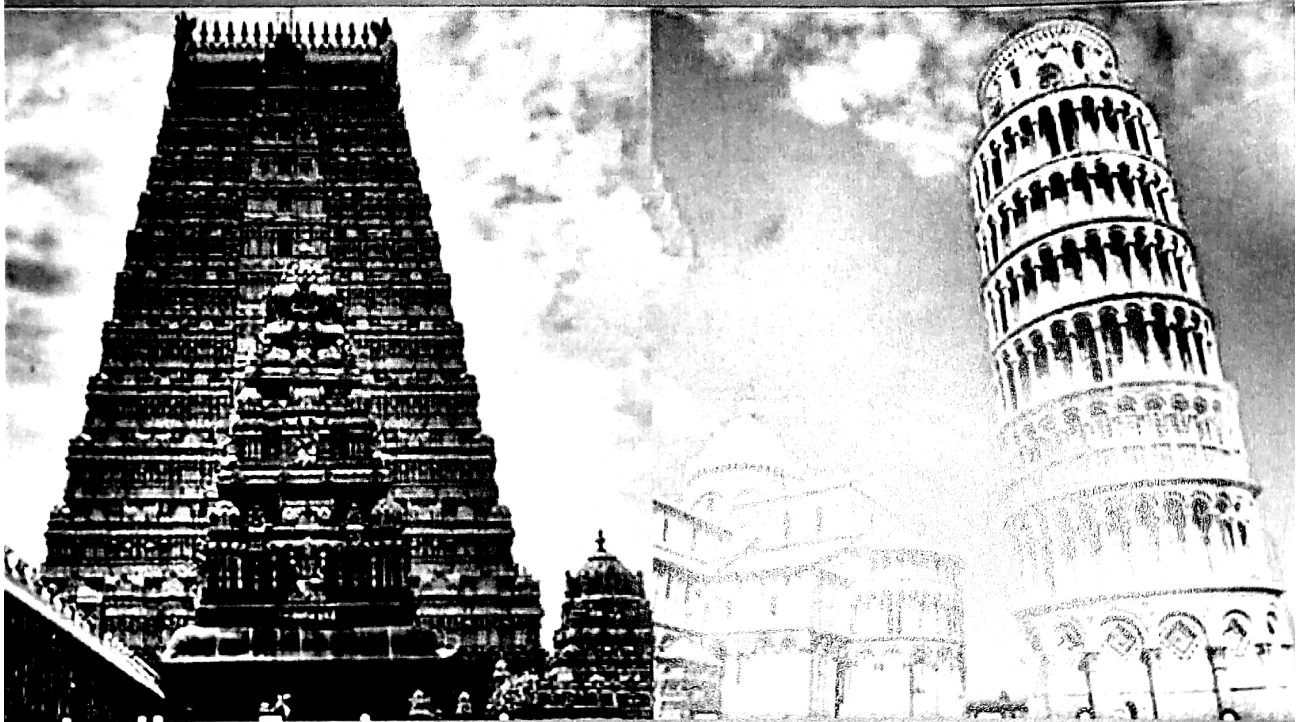

PRINCIPAL
Nutan Mahavidyalaya
Sailu, Dist. Parbhani




40 Feet Taller Beauty Created 300 Years Prior to this European Marvel.

**INDIAN CREATION, 9TH
CENTURY**

**EUROPEAN CREATION, 12TH
CENTURY**




PRINCIPAL
Nutan Mahavidyalaya,
Sailu, Dist. Parbhani

Samudra Manthan (THAILAND AIRPORT)

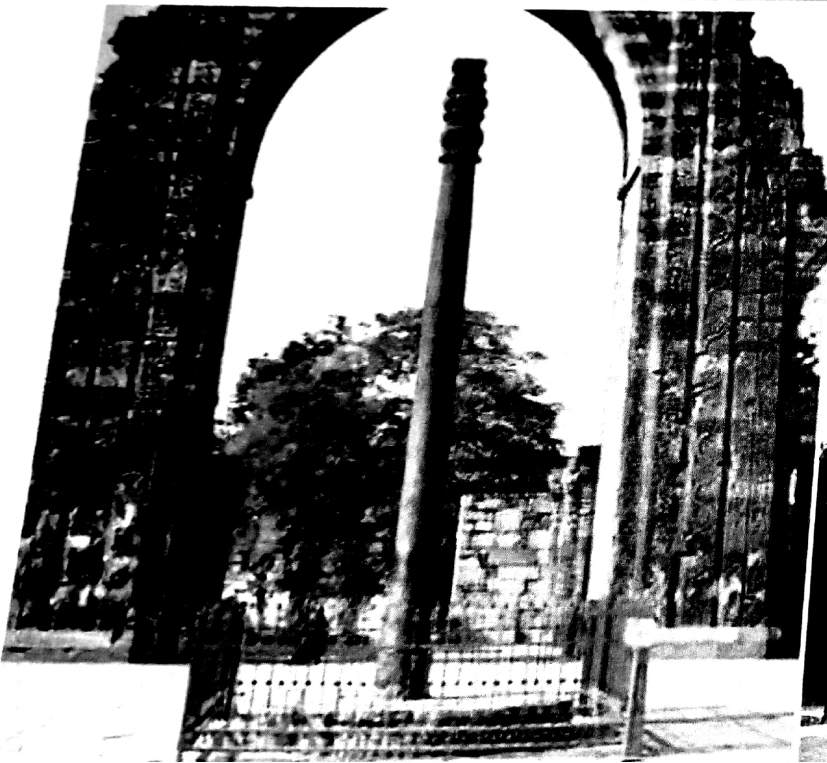


PRINCIPAL
Nutan Mahavidyalaya
Sailu, Dist. Parbhani



**Delhi Iron
Pillar Aged
Over 2300
Years But still
No Rusting**

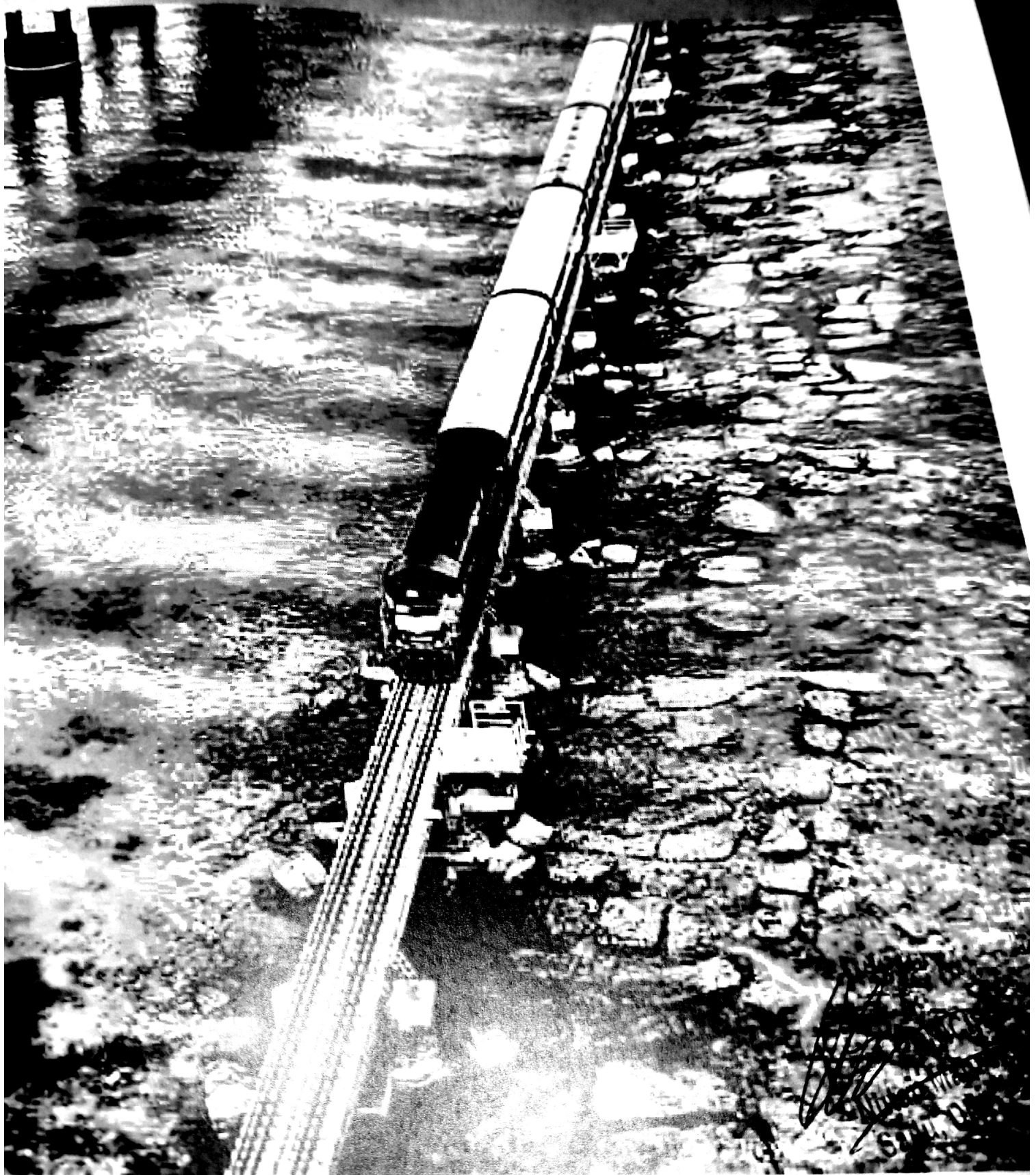
**The Eiffel Tower
aged over 83
Years, Lots of
Maintenance is
Done to prevent
Rusting**



Pamban Bridge, Rameswaram




A Visual Beauty!





Largest Man Made OM Symbol in the world




PRINCIPAL
Nutan Mahavidyalaya,
Sailu, Dist. Parbhani

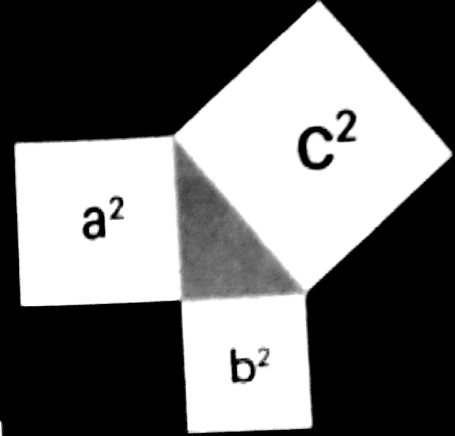
Baudhayana Sutra in Yajur Veda

Baudhayana Sulbasutra

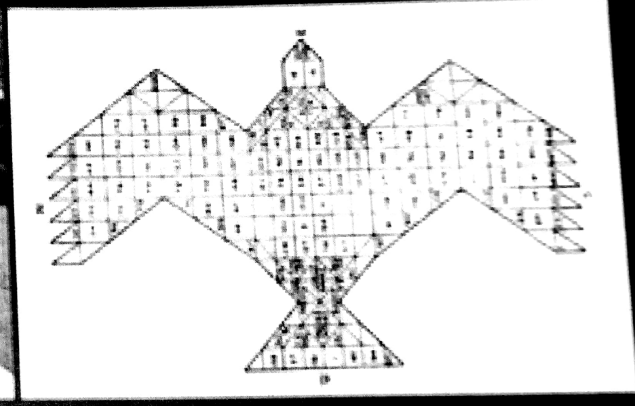
दीर्घचतुरश्रस्याक्षण्या रज्जुः पार्श्वमानी तिर्यग्
मानी च यत् पृथग् भूते कुस्तस्तदुभयं करोति ॥

Baudhāyana used a rope as an example in the above shloka/verse, which can be translated as:

"A rope stretched along the length of the diagonal produces an area which the vertical and horizontal sides makes together"



$$c^2 = a^2 + b^2$$



The Sulbasutras is like a guide to the Vedas which formulate rules for constructing Vedi (altars). They contain valuable information about the geometry of ancient India, including instructions for constructing sacrificial altars (vedi) and locating sacred fires (agni). This formula is used in constructing Yajna Vedi (altars) in the shape of an eagle with triangular tiles in a special type of Yajna called Agnicayana (a twelve day Yajna ceremony)

PRINCIPAL
Nutan Mahavidyalaya
Sailu, Dist. Parbhani

Mysteriously Growing Shivling!

Matangeshwar Temple, Madhya Pradesh, Bharat



**Ancient Fashion Much
Advanced than today! Just
Look at the High Heels!**

Ramappa Temple, Telangana




PRINCIPAL
Nutan Mahavidya
Sailu, Dist. Parb

Scientists praised in our books



Galileo



Newton



Copernicus



Dalton

Scientists who should be praised in our books



Brahmagupta



Aryabhata



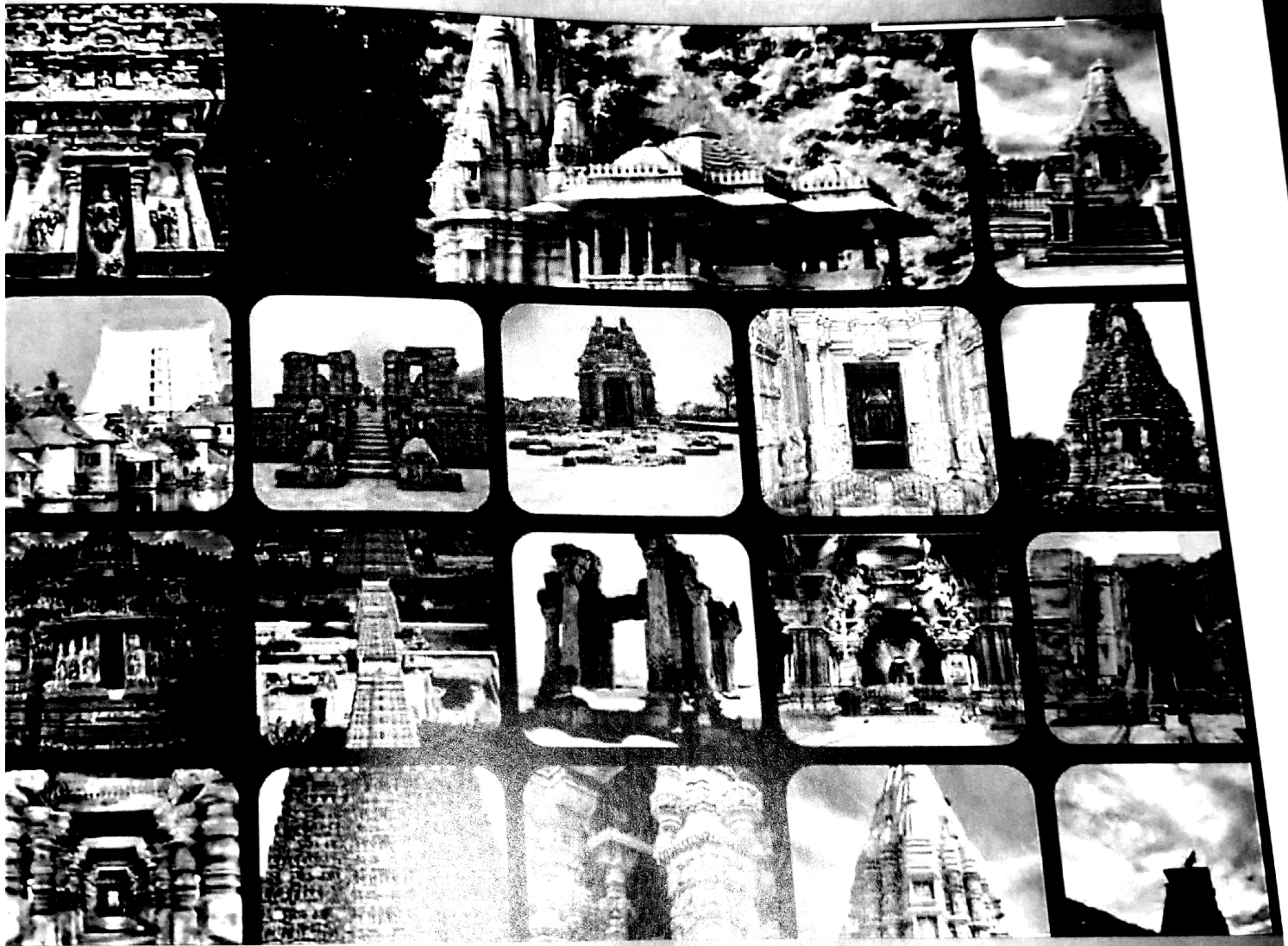
Varahmihira



Kanad

A handwritten signature in the bottom right corner of the page.

The Timeless Beauties that survived centuries of destruction



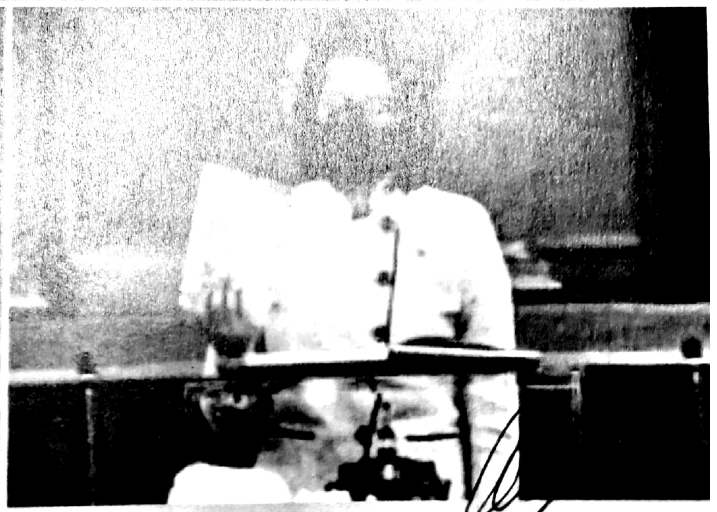
Signature

The Timeless Beauties that survived centuries of destruction



Signature

Politicians outside Bharat following Bhagwad Gita Diligently



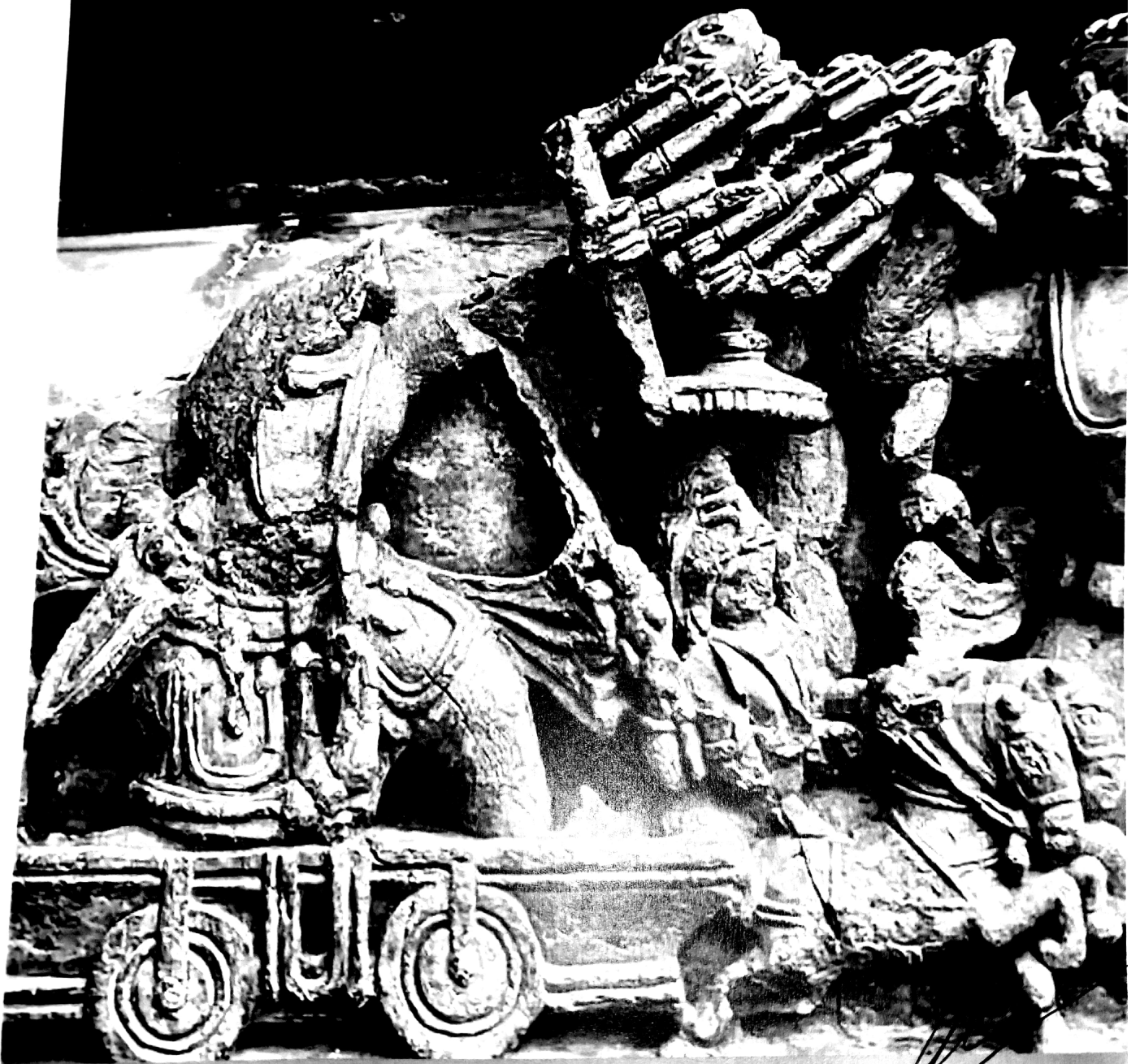
PRINCIPAL
Nutan Mahavidyalaya,
Sailu, Dist. Parbhani

**Ancient Astronauts,
12th Century HoySaleswara
Temple, Karnataka,
Bharat**



[Signature]
PRINCIPAL
Nutan Mahavidyalaya
Sailu, Dist. Parbhani

Rocket Warfare depicted in 12th Century Hoysaleswara Temple, Karnataka, Bharat

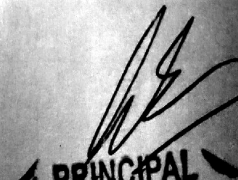


PRINCIPAL

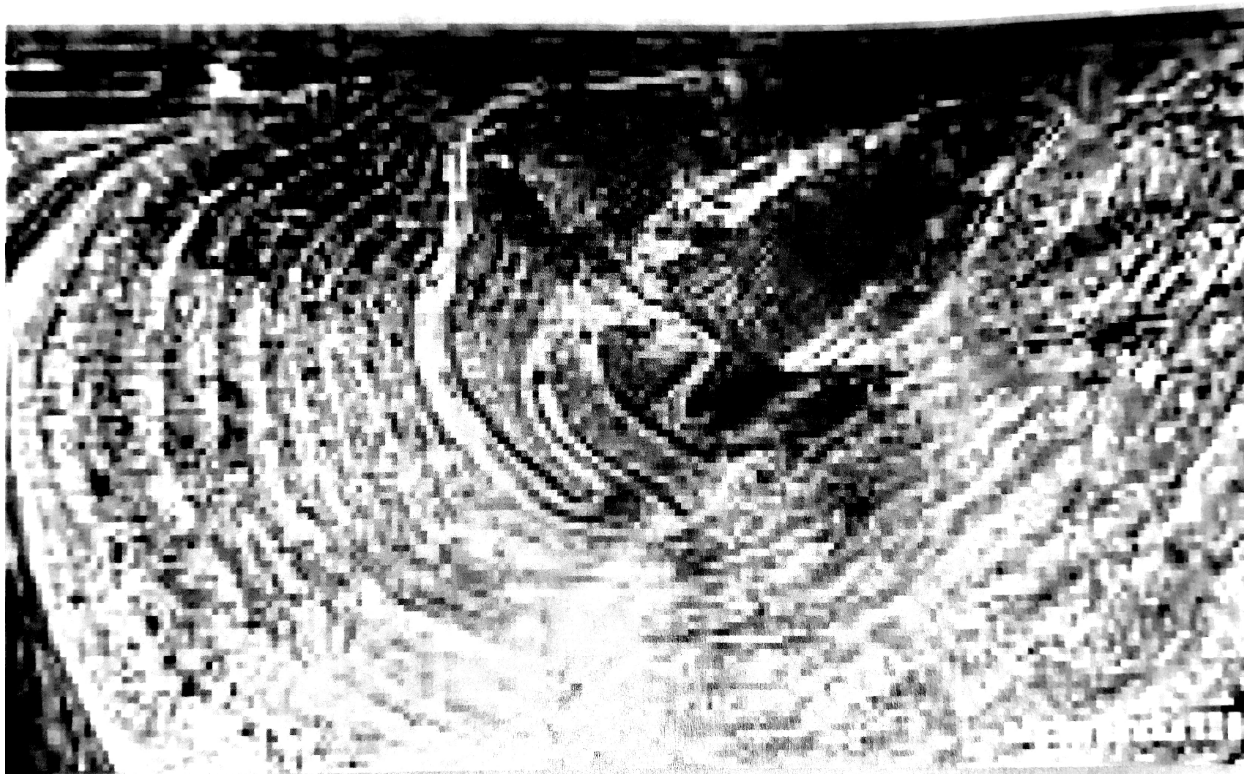
Nutan Mahavidyalaya,
Sailu, Dist. Parbhani


Ancient Telescope depicted in 12th Century Hoysaleswara Temple, Karnataka, Bharat




PRINCIPAL
Nutan Mahavidyalaya
Sailu, Dist. Parbhani

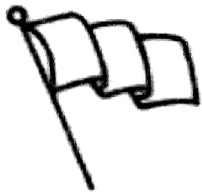
The mines of Rajasthan have given definite evidence of zinc production going back to 6th Century BC.




PRINCIPAL
Nutan Mahavidyalaya,
Sailu, Dist. Parbhani

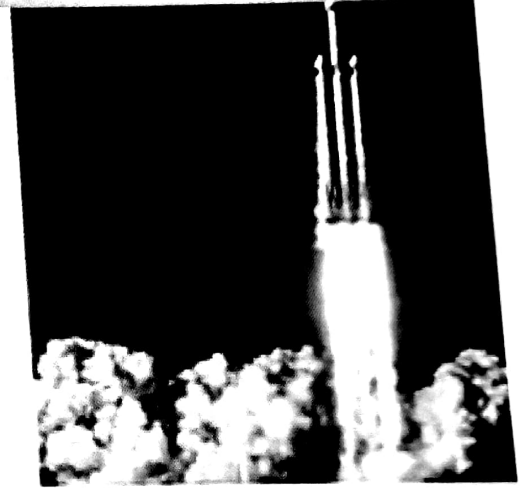
In Bhrigu samhita, three types of transportation are mentioned (on Road, on water and in sky)

THE WAYS OF TRANSPORT



जले नौकेव यानं स्याद
भूमियानं रथः स्मृतः ।
आकाशे अग्नियानं च
व्योमयानं तदेव हि ॥


(Bhrigu Samhita)



World's Largest Bhagwad Gita

Isckon, New Delhi, Bharat




PRINCIPAL
Nutan Mahavidyalaya
Sailu, Dist. Parbhani

Pingala- Indian Mathematician

PASCAL's TRIANGLE

NAMED AFTER FRENCH
MATHEMATICIAN
BLAISE PASCAL

(1600)

			1			
		1	1			
	1	2	1			
	1	3	3	1		
	1	4	6	4	1	
1	5	10	10	5	1	
1	6	15	20	15	6	1

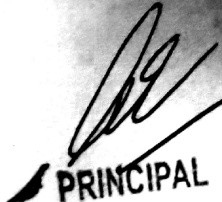
MERU PRASTARA

DERIVED FROM
PINGALA'S
FORMULA

(300 BCE)

मणखंडमेरुप्रस्तारः

१							११११
१							११११
१	१						११११
१	२	१					११११
१	३	३	१				११११
१	४	६	४	१			११११
१	५	१०	१०	५	१		११११
१	६	१५	२०	१५	६	१	११११
१	७	२१	३५	३५	२१	७	१


PRINCIPAL
Nutan Mahavidyalaya
Sailu, Dist. Parbhani

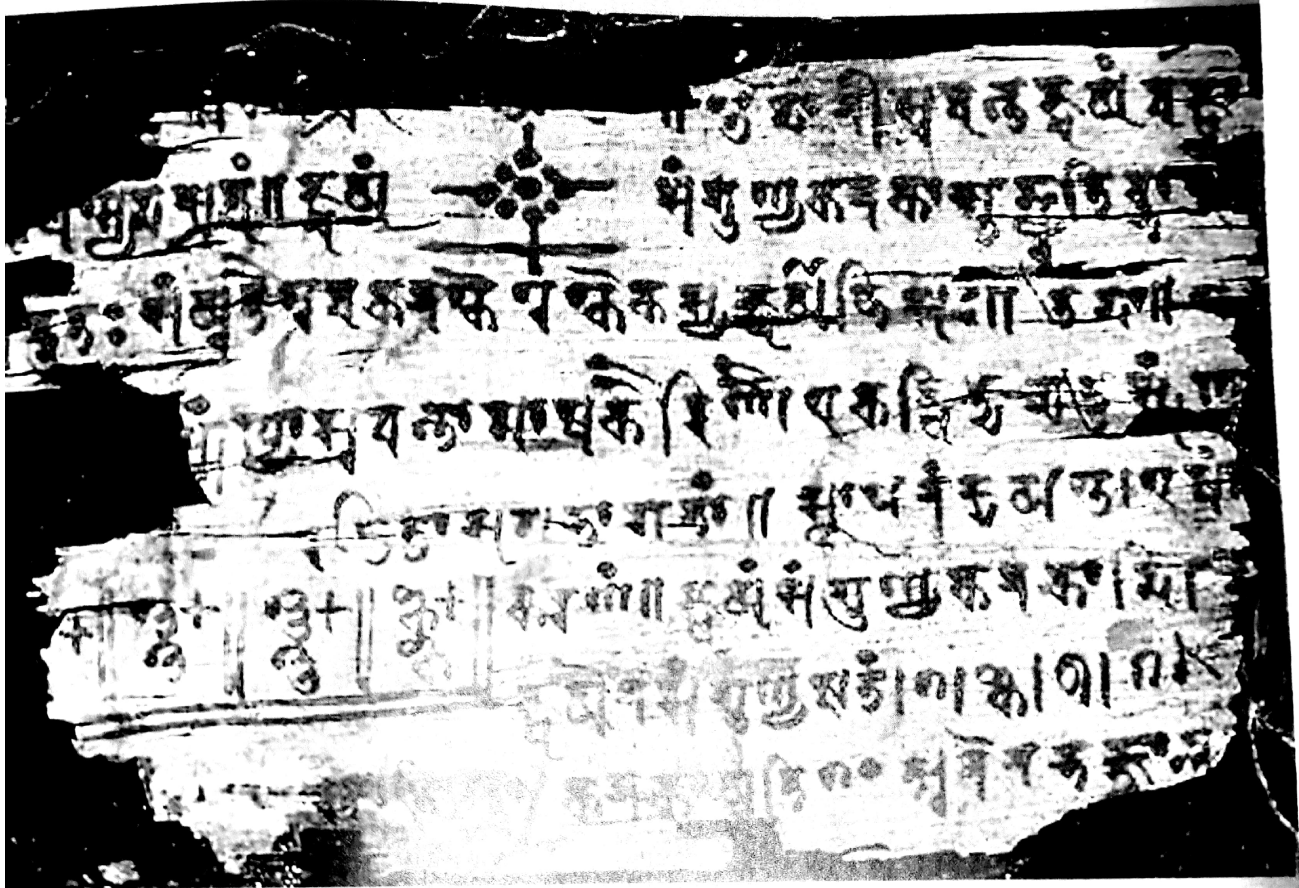


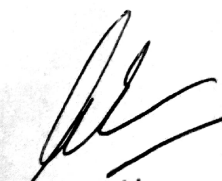
**Sushrut: World's First Surgeon
Wrote Sushrut Samhita 5000
Years Ago.
Described 1120 types of Diseases
and Cures**



BakhShali Manuscript- Dating Back to 3rd Century CE.

Ancient Hindu treatise on Arithmetic and Algebra.





PRINCIPAL
Nutan Mahavidyalaya
Sailu, Dist. Parbhani



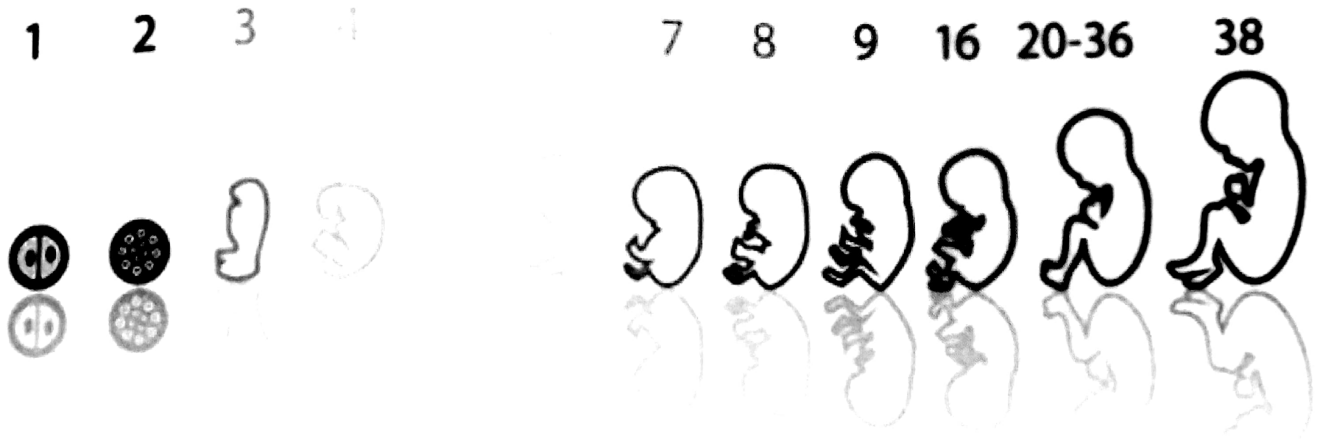
Surrogacy in Hindu Scriptures


Birth of Lord Balaram, 7th Child of Devaki and Vasudeva happened by transferring embryo to womb of Rohini (Vasudev's first Wife).




PRINCIPAL
Nutan Mahavidyalaya
Sailu, Dist. Parbhani

Embryo development stages described in Chapter 31, Bhagavata Mahapurana.

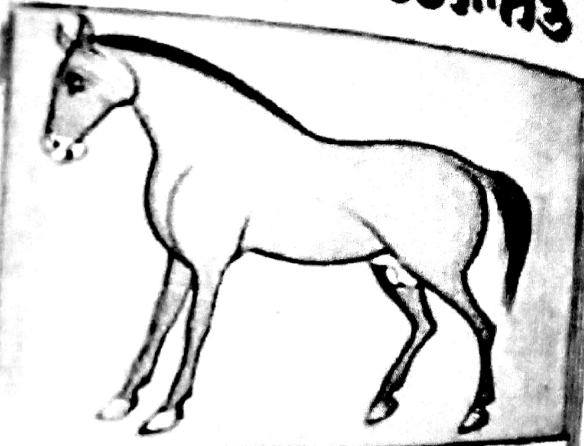



PRINCIPAL
Nutan Mahavidyalaya
Sailu, Dist. Parbhani

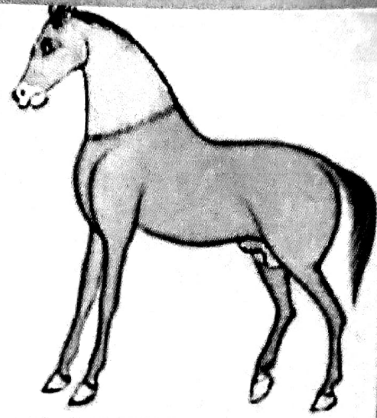
Shalihotra Samhita- Composed in 3rd Century BCE.

Early Indian treatise on
veterinary medicine (hippiatrics)

कार्सीरखोडिजे
गौंलोहीखोडाघो
किरासीरखोडिजेतड



होव॥८॥कांन॥९॥
काष॥१०॥युद्ध॥११॥
मष॥१२॥लिलाट॥१३॥



खाडजासारगपा
रखोडिजे रोगकीम
पडांमूंजिस्ये रोगहं
यजिस्याअसथानकं
सीरखोडिजे॥अथन्

कोऊप्रमाणा॥मुषयल १६
काषयल॥१९०॥लिला
टयल॥५०॥युद्धयल
॥२५॥खिंयल॥१२॥जी
नयल॥२५॥गुदायल॥
१३॥येतास्थानकातो य




हीप्रमाणाहीसीरखोडिजे॥अधिकलोहीनजाव
दिजे॥ओरस्थानआपनीबुधियोडायसीरखो

**Vaikuntha Hill and Garuda Hill
with Noticeable Shapes of Lord
and his vehicle.**



vaikuntha hill
TIRUPATI


Garuda hill
TIRUPATI


PRINCIPAL
Nutan Mahavidyalaya
Sailu, Dist. Parbhani



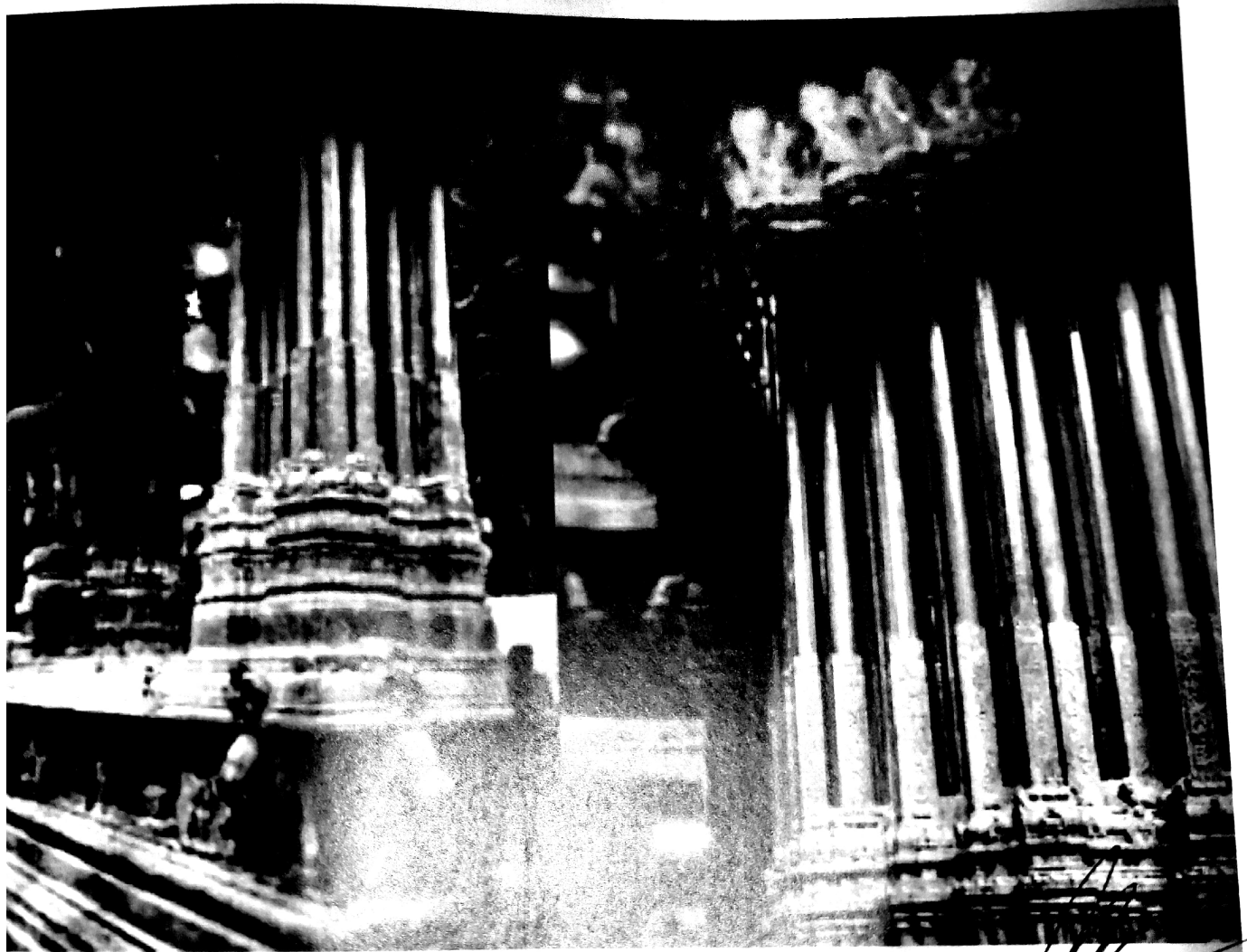
Cholagangam Lake – India's Largest Ancient Man-Made Lake In India





PRINCIPAL
Nutan Mahavidyalaya,
Sailu, Dist. Parbhani

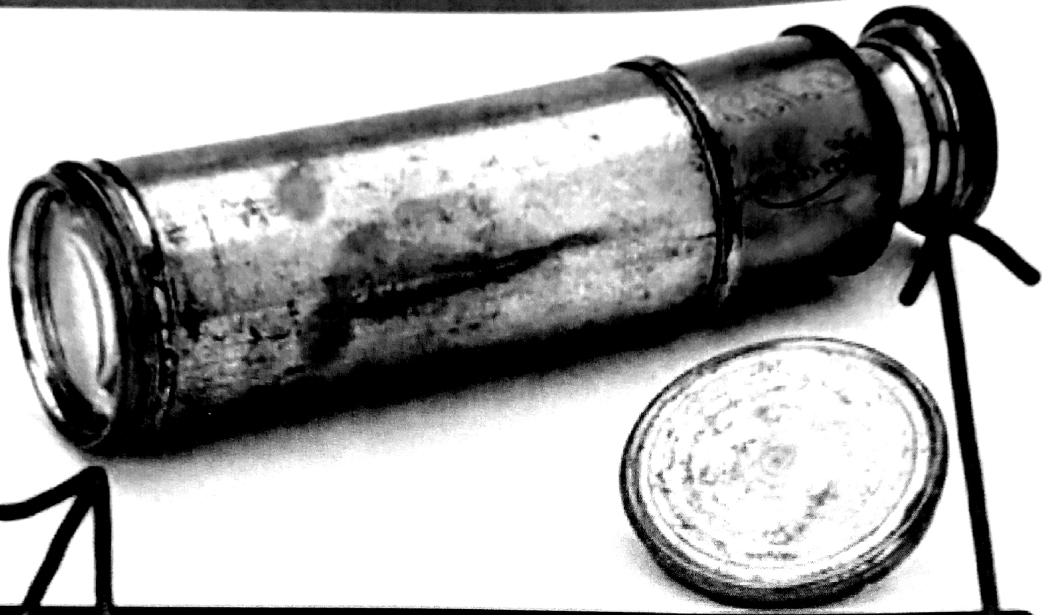
Musical Pillars- Nellaiappar Temple, TamilNadu.

Each Pillar made out of a single rock. When Tapped, the Pillars produce sounds of 7 Classical Musical notes.

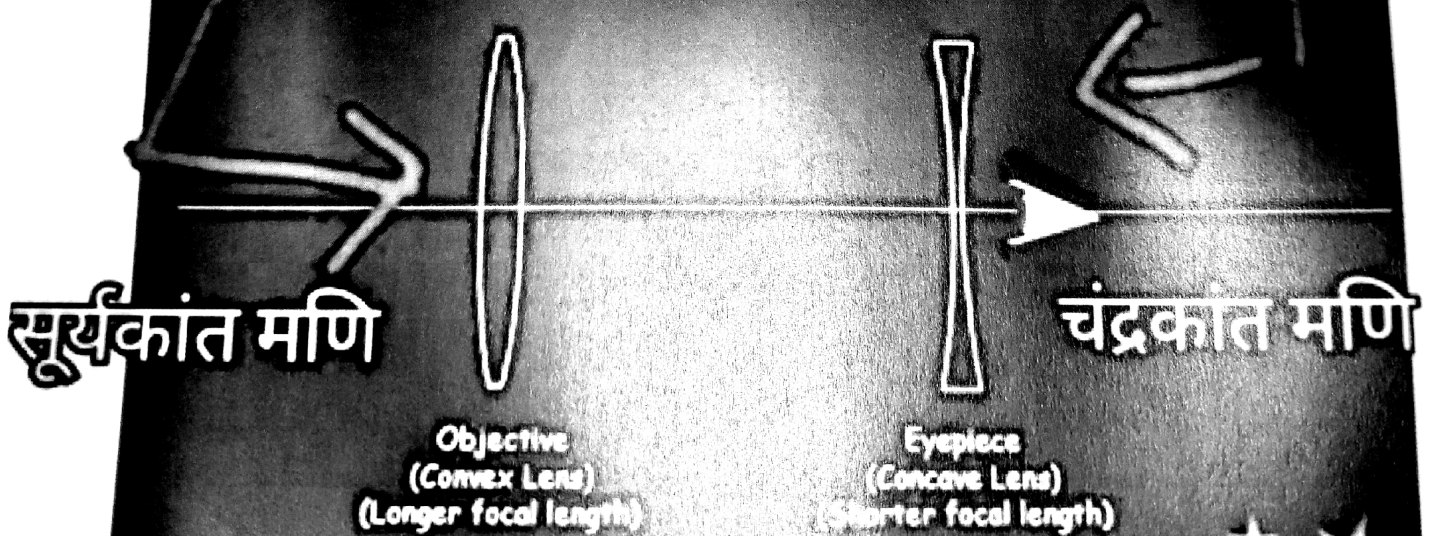



PRINCIPAL
Nutan Mahavidyalaya
Sailu, Dist. Parbhani

Ancient Indian Telescope



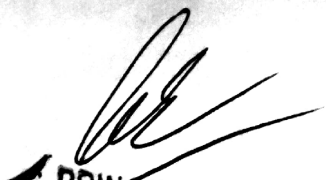
Ancient Indian Telescope



PRINCIPAL
Nutan Mahavidyalaya
Sailu, Dist. Parbhani

Indus Valley Civilization (8000 yrs old) cities contained well-organized wastewater drainage systems, trash collection systems, and possibly even public granaries and baths.





PRINCIPAL
Nutan Mahavidyalaya
Sailu, Dist. Parbhani

Space Suits

Maharishi Bharadwaj In Yantra Sarvasva writes about Space Suits detailing the materials used for making them. These special suits were made not just of cotton or silk but also fibres from underwater plants.




PRINCIPAL
Nutan Mahavidyalaya
Sailu, Dist. Parbhani

Evolution process described in Vishnu Purana thousands of years ago.

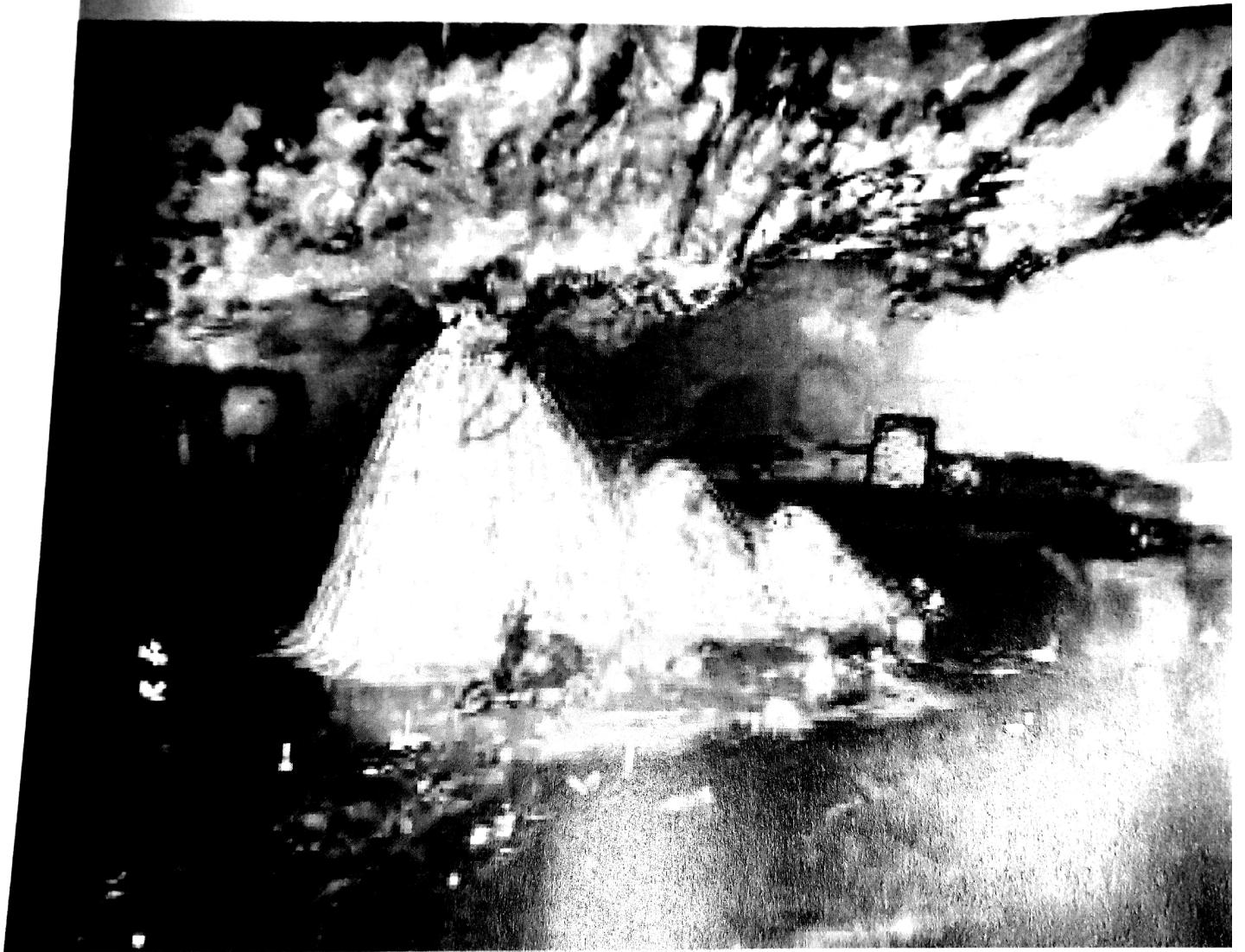
Evolution according to Darwin (Described in Origin of Species)




Evolution according to Dashavatar (Described in Vishnu Puraan)


PRINCIPAL
 Nutan Mahavidyalaya
 Sailu, Dist. Parbhani

**Tapkeshwar Mahadev Temple,
Dehradun, Bharat.
Water droplets continuously
drop on the shivling from an
unknown water source.**




PRINCIPAL
Nutan Mahavidyalaya
Sailu, Dist. Parbhani

Sringeri's VidyaShankara temple has 12 pillars inside with 12 solar month symbols on them.

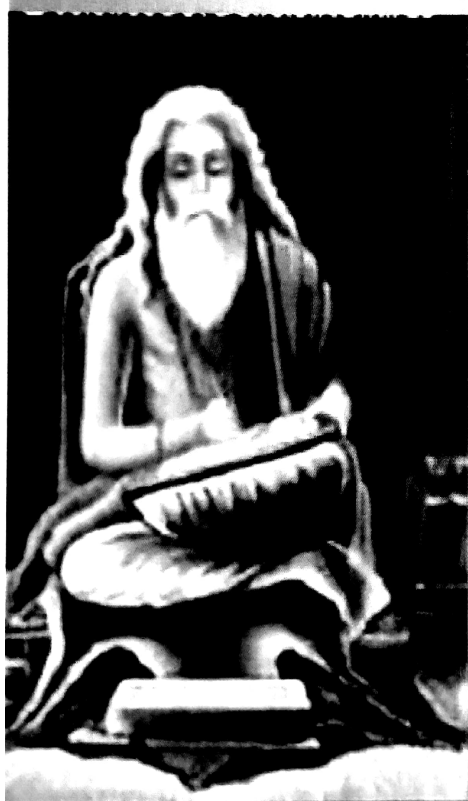
Each morning, When Sun Rays enter, they hit one specific pillar indicating which month of the calendar it is.





Rishi Kanada discussed water cycle in detail 4000 years ago.

Mentioning evaporation, transpiration, condensation, precipitation and collection systematically, just in four sutras.




The Water Cycle

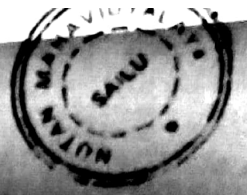


[Signature]
PRINCIPAL
Nutan Mahavidyalaya,
Sailu, Dist. Parbhani

Nagarjuna, Well known name in Metallurgy, Chemistry and Alchemy. He conducted notable experiments for transforming base elements into Gold.




PRINCIPAL
Nutan Mahavidyalaya
Sailu, Dist. Parbhani



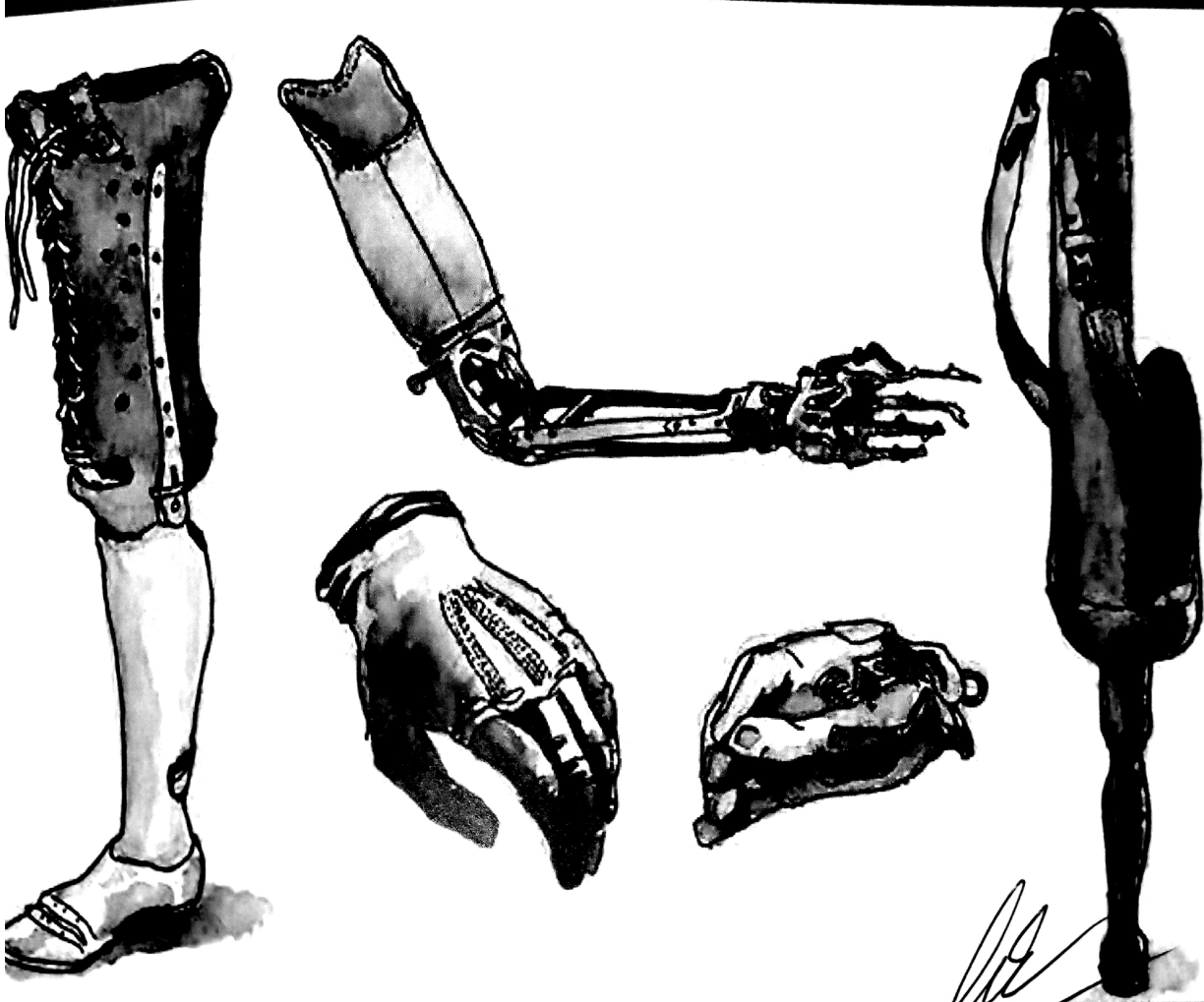
Varaha Mihira, astronomer, mathematician, astrologer of 1st century BCE was first to discover 'Water on Mars'.



Prosthesis in Rig Veda

“Sodao janghamaysing vishapalaoi
dhana hite sterba pratyadhattyam” Rig-
Veda- 1:116:15

The foot of Vispala, the wife of Khela,
was cut off, like the wing of a bird, in an
engagement by night. Immediately you
gave her a metallic leg, so that she might
walk.



Test Tube Babies in Mahabharata



The bulge of flesh or the immature fetus was present within the womb of Gandhari which unfortunately came out. Such was the expansion of science that the lump of flesh was turned into 101 matured babies in the span of two years keeping them in pots of ghee and herbs.



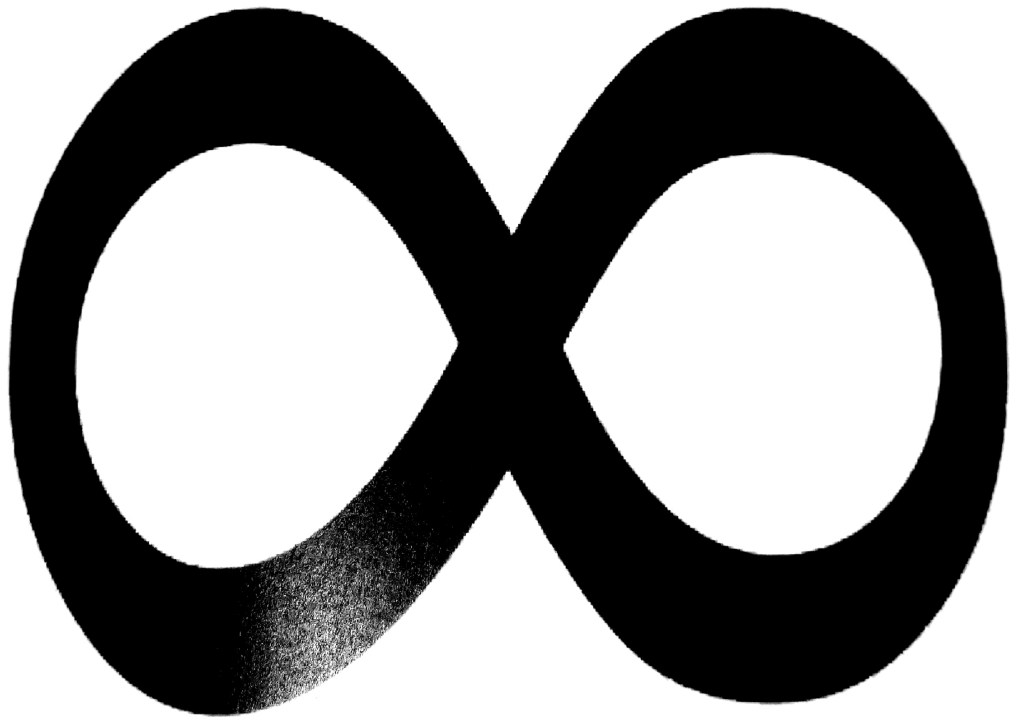
Concept Of Infinity defined by Bhaskaracharya

Definition of Infinity - Bhaskaracharya's Bijaganita
2.18

In Bijaganita, we find the following shlok

वधादौ वियत् खस्य खं खेन घाते खहारो भवेत् खेन भक्तश्च राशिः ॥
vadhādaṁ viyat khasya khaṁ khena ghāte khahāro
bhavet khena bhaktaśca rāṣiḥ ॥

A zero results when multiplied by zero, a "khahara"
(zero-divided, or infinity) results when a number is
divided by zero.



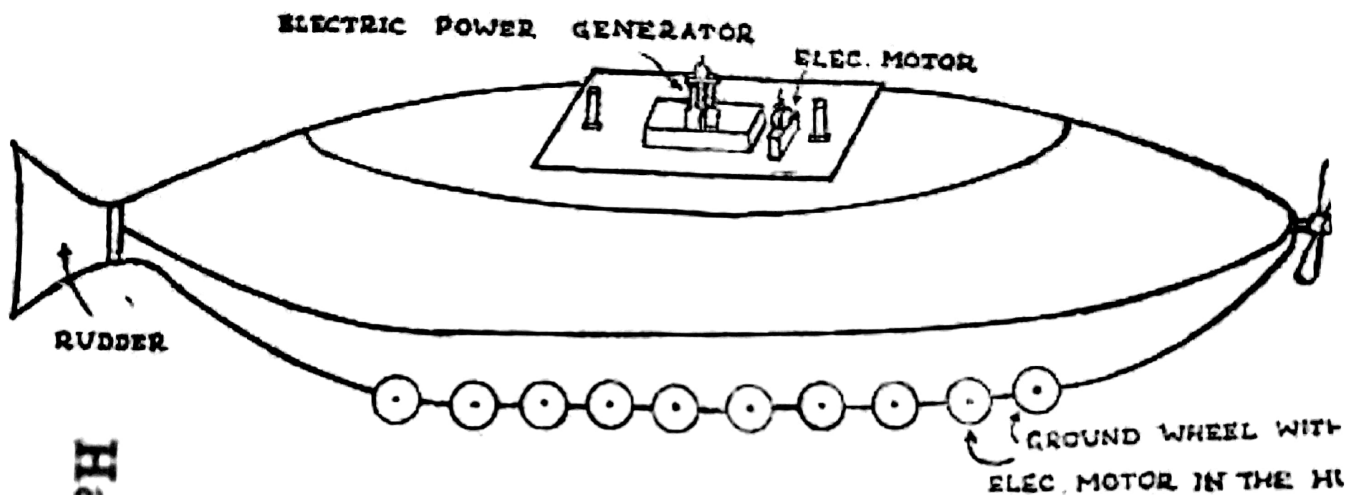
PRINCIPAL
Nutan Mahavidyalaya
Sailu, Dist. Parbhani

Vaimanika Shastra was reproduced in early 20th Century.

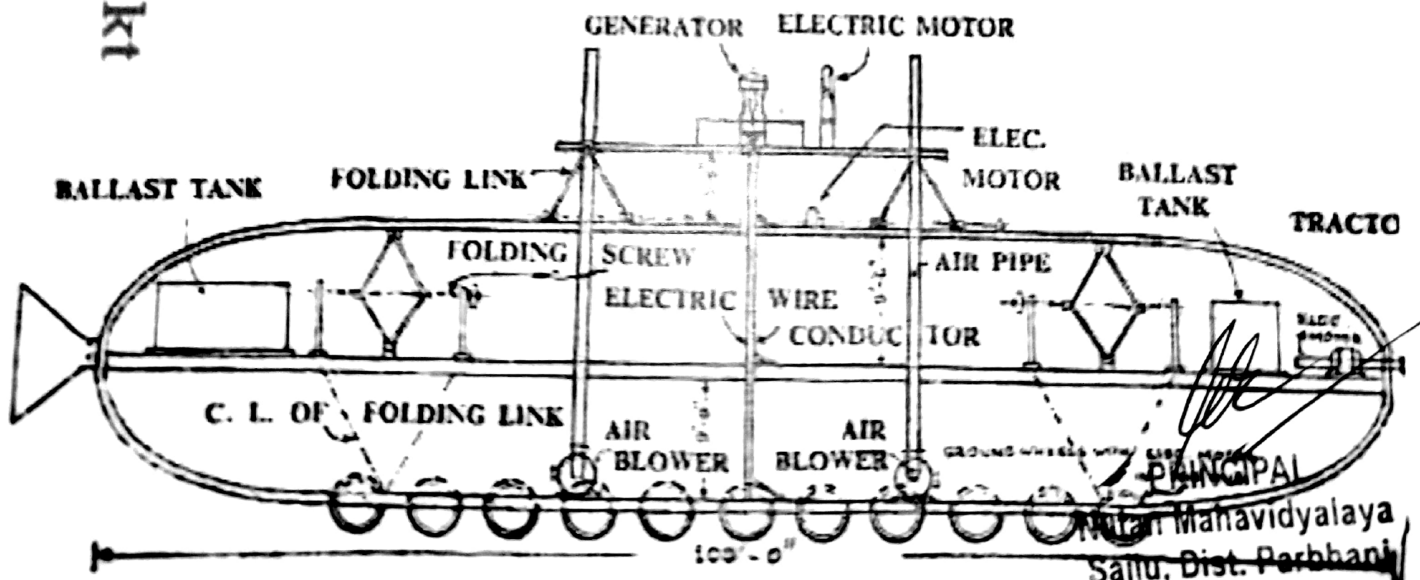
Manual is in Sanskrit and discusses about the Science involved in Study, Design and Manufacturing of Airflights.

TRIPURA VIMANA

PERSPECTIVE VIEW



VERTICAL SECTION




Law of Gravitation

Adi Shankaracharya who lived around 460 BCE, wrote in his commentary on the Upanishads: "If the divinity of the earth would not pull down this body by supporting apana", this body would have floated anywhere in space."

The ancient Indian scholar Varahamihira said: "Planet earth being surrounded by various stellar bodies situated in space, is similar to an iron sphere remaining suspended between two magnets."




PRINCIPAL
Nutan Mahavidyalaya
Sailu, Dist. Parbhani

Theory of Atom



Acharya Kanada, also known as Kashyapa, an ancient Indian natural scientist and philosopher, formulated the theory of atoms 2500 years before John Dalton's discovery.

Kanada's book, called Vaisheshik Darshan (also called Kannada sutras), captured his atomic theory.

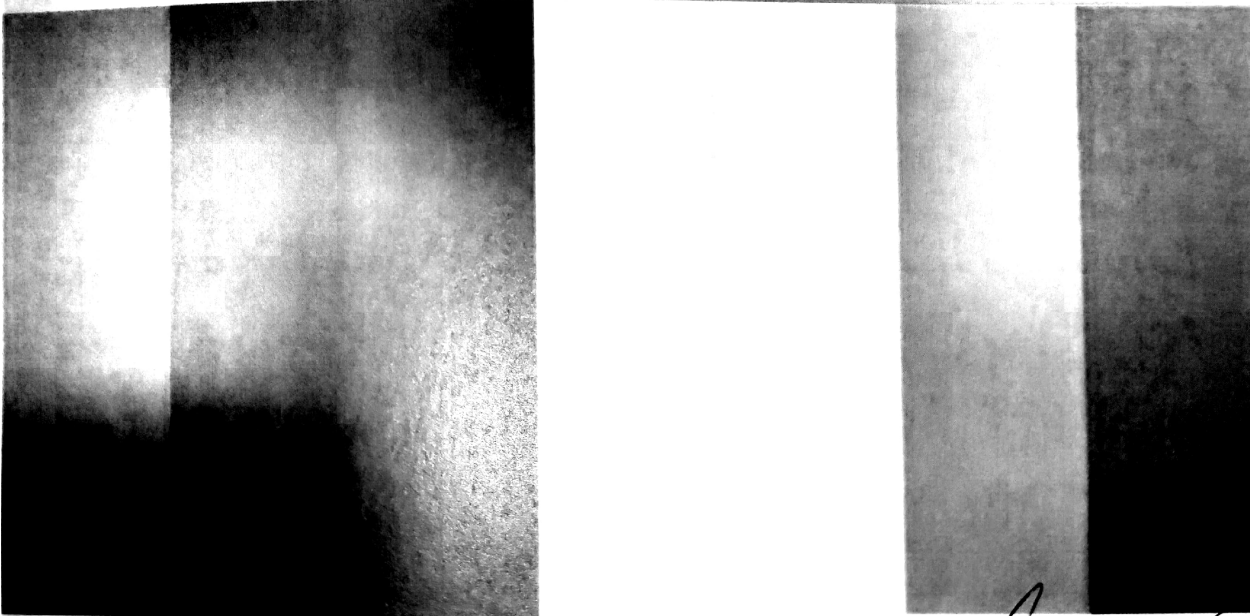



W
PRINCIPAL
Nutan Mahavidyalaya,
Sailu, Dist. Parbhani

VIBGYOR in Rigveda

In Rigveda (Indrasukta-12), the word "Saptarashmi" is used which shows that vedic rishis knew clearly the basic hidden fact of seven colors in sunrays.

Since Rigvedic period i.e, 1500 B.C. Indian rishis before Aristotle or Newton have come to know about the secret of VIBGYOR.




PRINCIPAL
Nutan Mahavidyalaya
Sailu, Dist. Parbhani

Speed of Light

Speed of Light was actually determined accurately in Rig Veda thousands of years ago.

It was further elaborated by Sayana in 14th century AD.

The Rig Veda , an ancient Indian sacred text, said to be $\cong 7000$ years old, had a mysterious hymn that gave the speed of light :

योजनानाम् सहस्रं द्वे द्वे शते द्वे च योजने एकेन
निमिशार्धेन क्रम्म्ण नमोस्तुते ॥

(source: Rigveda, translation- G.V.Raghava Rao.)

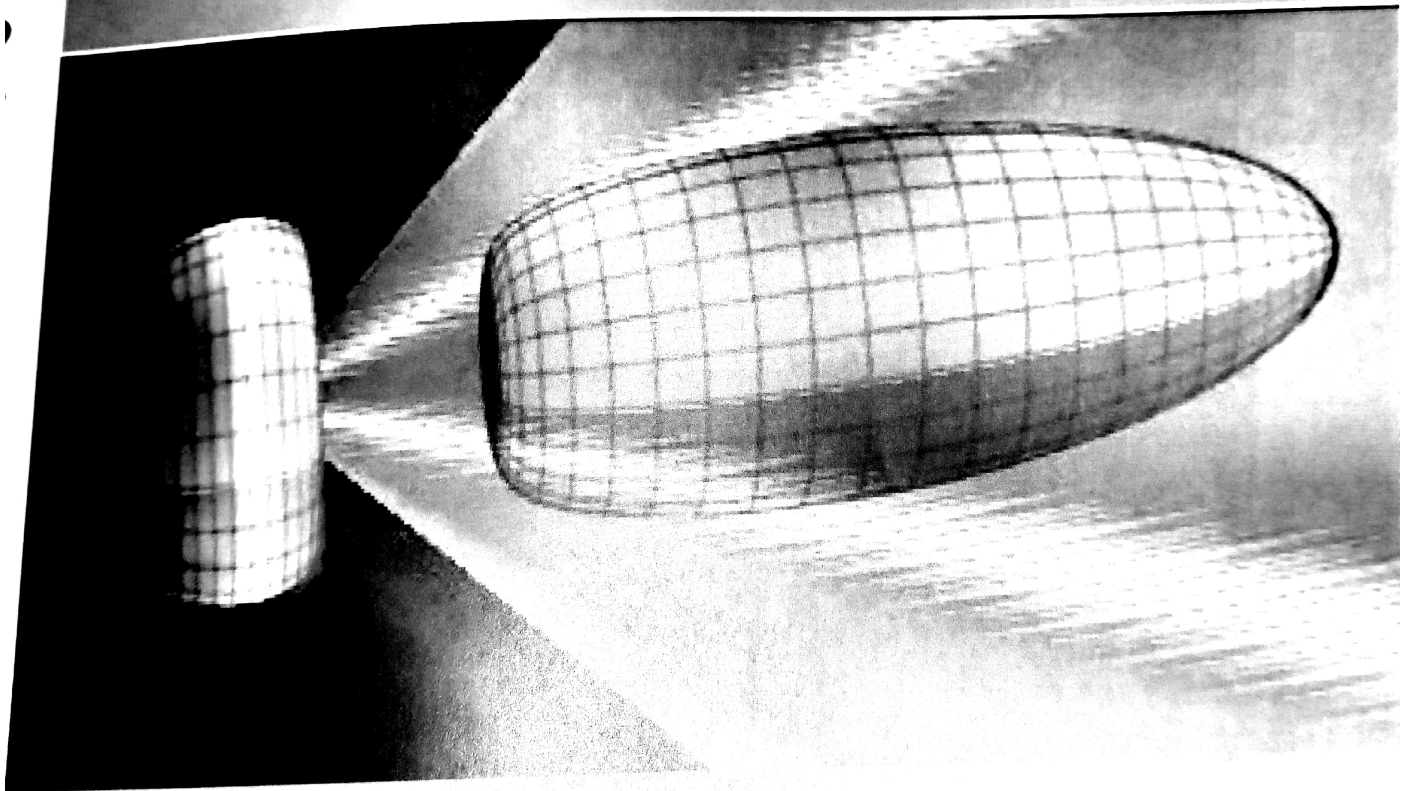
"The sun's rays travels 2202 Yojanas in just half a Nimisha." The word "sahasra" means 1000, द्वे is "dwe" ,means "2", and "shate" means 100.

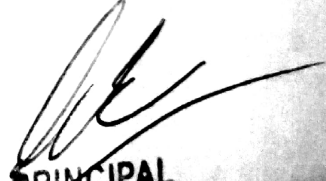
Nuclear Energy



Mundakopanishad written around 6000 BCE in ancient india, is associated with the Atharvaveda.

It describes about Tachyons (particles that travel faster than light), Ultra-Violet band, Infra-Red band, Nuclear Energy and Black Holes in the space.




PRINCIPAL
Nutan Mahavidyalaya
Sailu, Dist. Parbhani

Ancient Shipping & Navigation

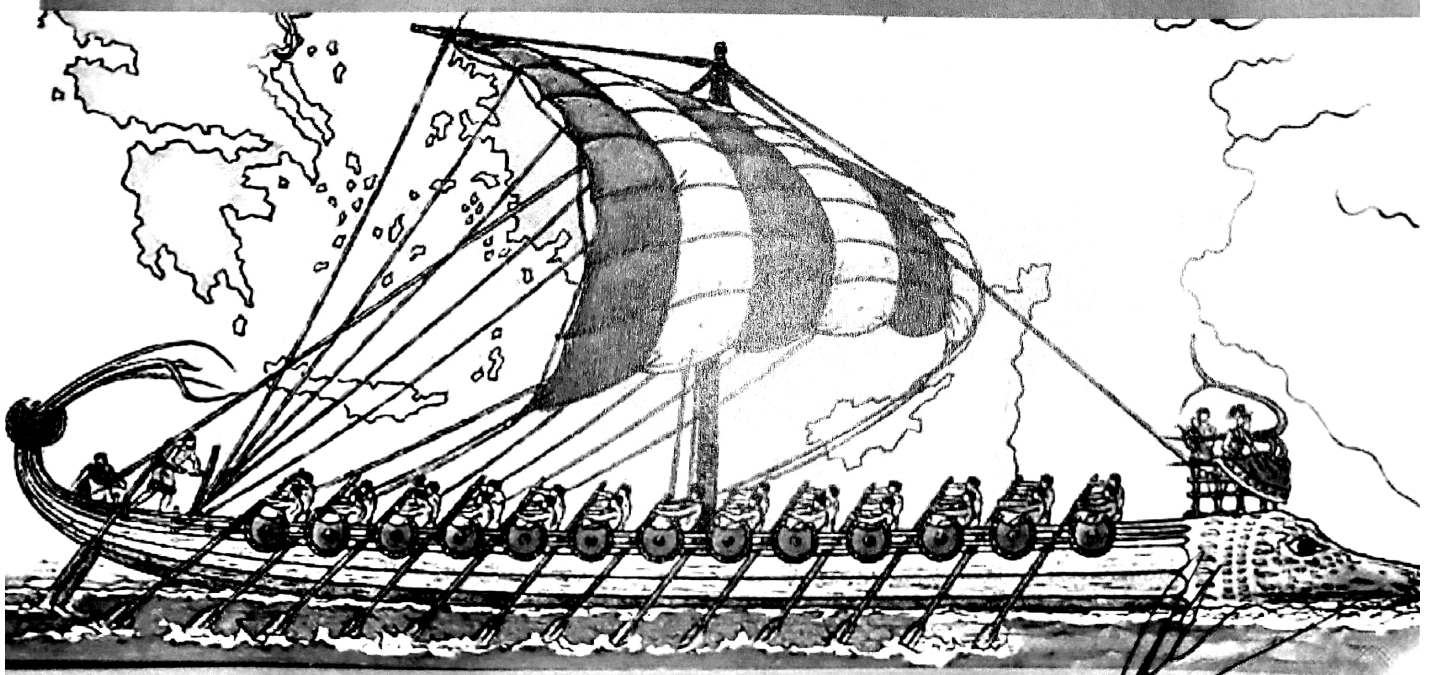
The art of Navigation was born in the river Sindh more than 6000 years ago.

In Rigveda 1.25.7; 7.88.3 and other instances, Samudra (Ocean/Sea) is mentioned together with ships.

Some words that are used for ships are Nau, Peru, Dhi and Druma.

A ship with a hundred oars is mentioned in RV 1.116.

There were also ships with three masts or with ten oars.



PRINCIPAL

Nutan Mahavidyalaya |
Sailu, Dist. Parbhani

**JAI BHARAT
VANDE MATARAM**



**MAGNIFICENT BHARAT- AN
INITIATIVE TO BRING AWARENESS
ABOUT OUR GREAT LAND TO THE
YOUNGER GENERATIONS.**

**PRINCIPAL
Nutan Mahavidyalaya
Sailu, Dist. Parbhani**